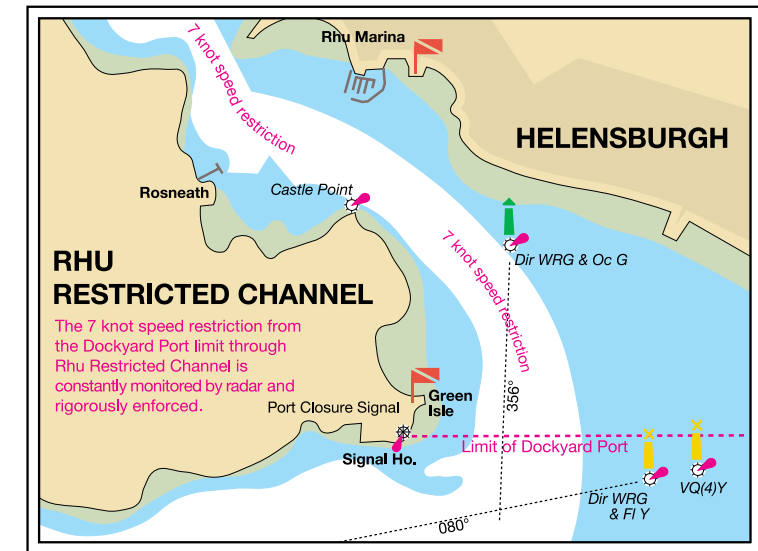


**THE ROYAL NAVY
THE QUEEN'S HARBOUR REGULATIONS**



Craft entering the Gareloch or Loch Long at any time, or if in doubt, should contact the QHM Duty Controller on **VHF Channel 73** or **01436 674321 Extension 3555 (office hours); Extension 4005 (out of hours)**. Queen's Harbour information is available at: www.gov.uk/government/groups/qhm-clyde
Note: PWCs and windsurfers etc are prohibited within Queen's Harbour limits.

RHU RESTRICTED CHANNEL
When Rhu RESTRICTED CHANNEL is closed for the transit of large naval craft, the following signals are shown:



Location of signals:
Faslane, Lattice Mast, South Shore Rosneath Point and aboard tugs and patrol craft in the vicinity.

FASLANE & COULPORT RESTRICTED AREAS
No vessel is permitted in the areas shown on Admiralty Charts when the following signals are displayed at the area and on tugs or patrol craft in the vicinity.

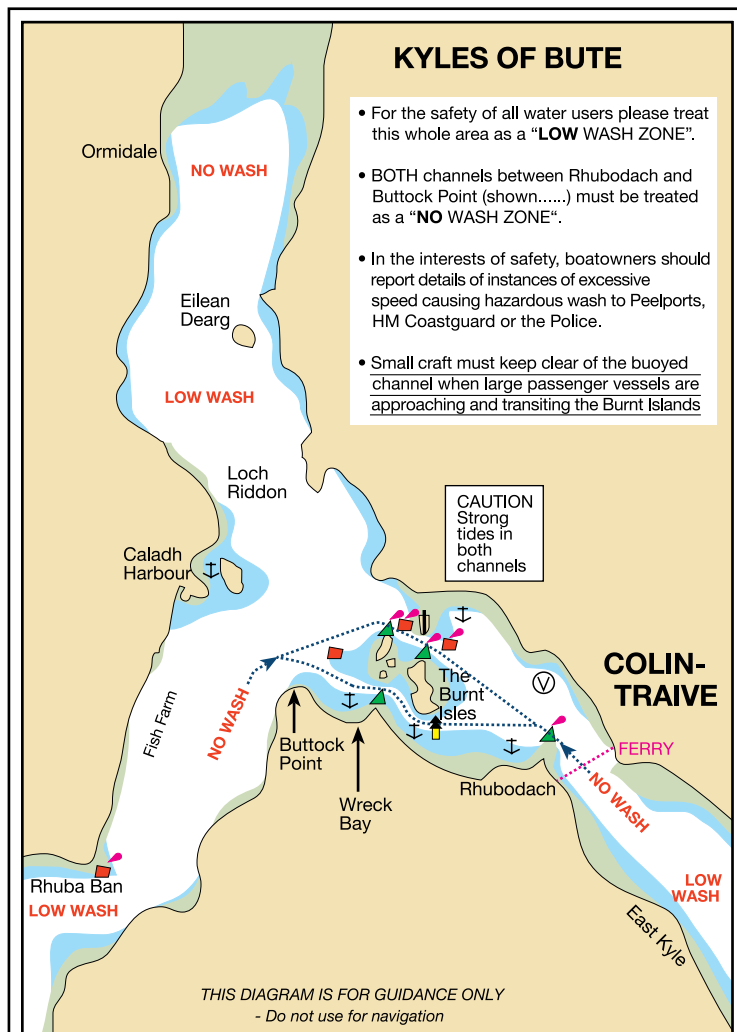
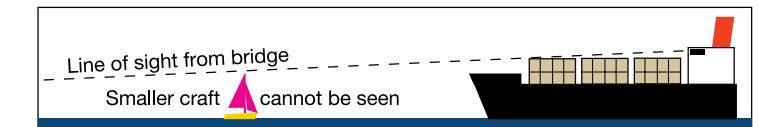


Coullport Restricted Area lies on the east side of Loch Long, but extends almost to the western shore. Craft in transit should keep to the western shore at all times. MOD Police launches are in attendance.

OTHER AREAS
Full information is given on the relevant charts.

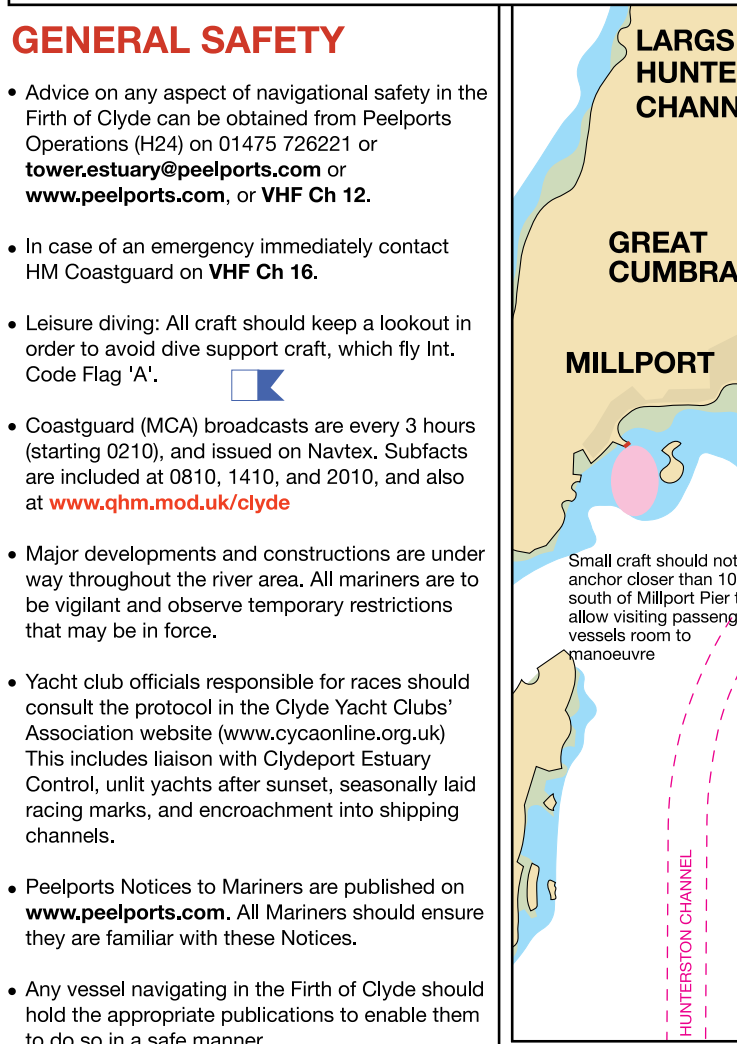
LOCH GOIL RANGE
The closure of Loch Goil, whilst trials are in progress, is signalled by the display of large red flags at Douglas Pier and Carrick Castle Pier. When these flags are flying, mariners wishing to operate within Loch Goil are requested to contact 01301 702011, or call Range Control on VHF Ch69: "Golf Xray Alpha".

LOCH FYNE RANGE
The Loch Fyne Range is situated on the eastern side of the Loch between Strachur and St Catherine's Point. If the range is in use keep to the western shore.



KYLES OF BUTE

- For the safety of all water users please treat this whole area as a "LOW WASH ZONE".
- BOTH channels between Rhubodach and Butttock Point (shown.....) must be treated as a "NO WASH ZONE".
- In the interests of safety, boatowners should report details of instances of excessive speed causing hazardous wash to Peelports, HM Coastguard or the Police.
- Small craft must keep clear of the buoyed channel when large passenger vessels are approaching and transiting the Burnt Islands



GENERAL SAFETY

- Advice on any aspect of navigational safety in the Firth of Clyde can be obtained from Peelports Operations (H24) on 01475 726221 or tower.estuary@peelports.com or www.peelports.com, or VHF Ch 12.
- In case of an emergency immediately contact HM Coastguard on **VHF Ch 16**.
- Leisure diving: All craft should keep a lookout in order to avoid dive support craft, which fly Int. Code Flag 'A'.
- Coastguard (MCA) broadcasts are every 3 hours (starting 0210), and issued on Navtex. Subfacts are included at 0810, 1410, and 2010, and also at www.qhm.mod.uk/clyde
- Major developments and constructions are under way throughout the river area. All mariners are to be vigilant and observe temporary restrictions that may be in force.
- Yacht club officials responsible for races should consult the protocol in the Clyde Yacht Clubs' Association website (www.cycycaonline.org.uk) This includes liaison with Clydeport Estuary Control, until yachts after sunset, seasonally laid racing marks, and encroachment into shipping channels.
- Peelports Notices to Mariners are published on www.peelports.com. All Mariners should ensure they are familiar with these Notices.
- Any vessel navigating in the Firth of Clyde should hold the appropriate publications to enable them to do so in a safe manner.

SAFETY: OTHER CRAFT

Vessels, particularly power craft under way in the Kyles of Bute and Loch Riddon, or when passing any location being used by moored or anchored craft, should observe the following guidelines:

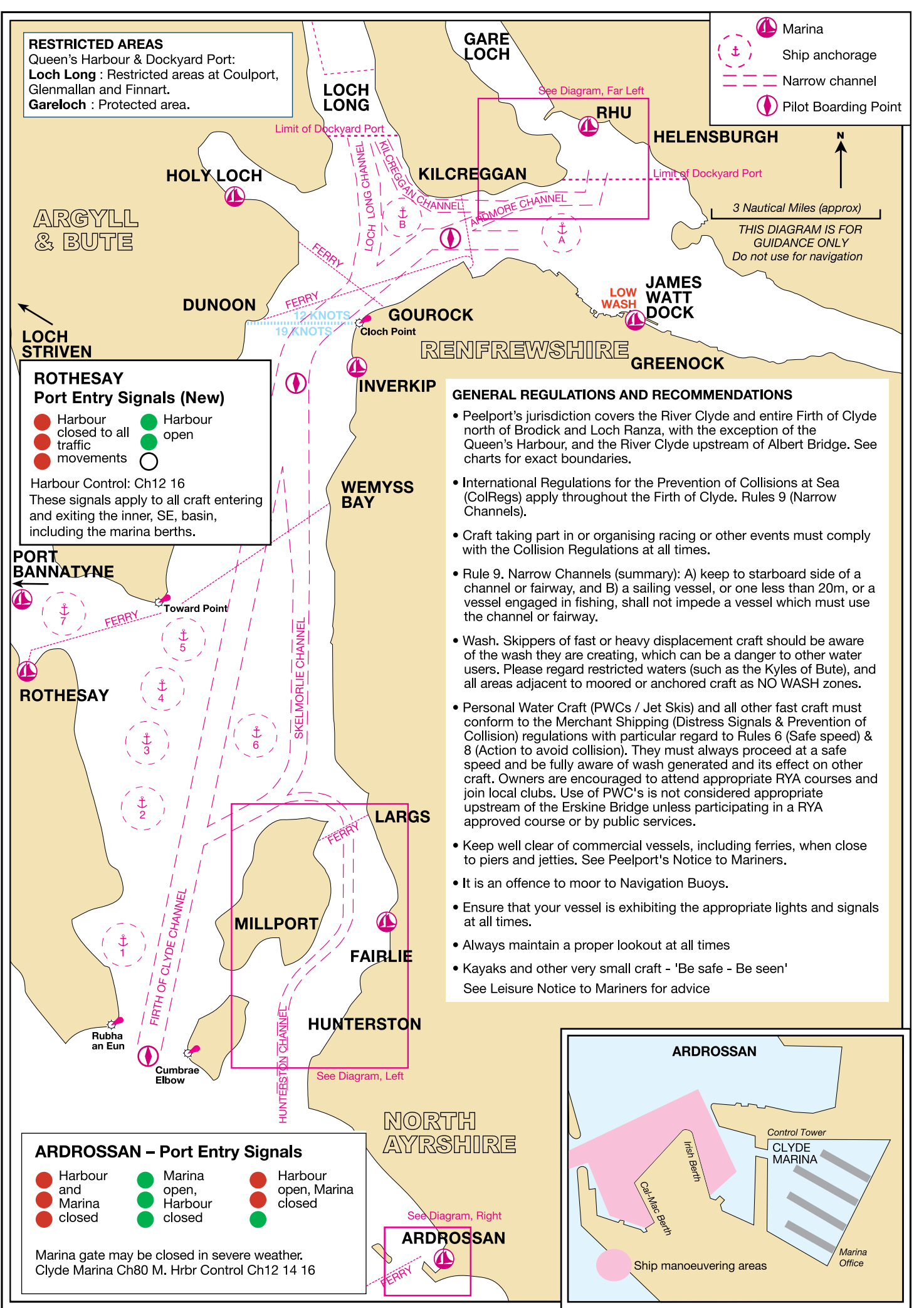
- Your wash affects other vessels long after you have passed the location, so you may be unaware of the problems you are causing. Wash can cause damage, injury, or worse.
- Keep a lookout for moored craft with a dinghy astern (indicating people on board), craft anchored or rafted together, children in sailing or rubber dinghies, people swimming or launching a boat from the shore, or ferrying people or stores to or from the shore.
- It is essential to slow to your **NO WASH SPEED** in these circumstances.

THE ENVIRONMENT

We all enjoy the Clyde's superb environment, so please do your bit to keep it that way.

- Fuel:** be sure to avoid spilling.
- Toilets:** use shore facilities if available
- Litter:** use marina facilities and recycle
- Non Native Species:** learn about this threat to our marine environment

You can get all the information you need to be an environment friendly sailor at: www.thegreenblue.org.uk



RESTRICTED AREAS
Queen's Harbour & Dockyard Port:
Loch Long : Restricted areas at Coullport, Glenmullan and Finnart.
Gareloch : Protected area.

ROTHESAY Port Entry Signals (New)

- Harbour closed to all traffic movements
- Harbour open
- Marina open
- Marina closed
- Harbour open, Marina closed

Harbour Control: Ch12 16
These signals apply to all craft entering and exiting the inner, SE, basin, including the marina berths.

ARDROSSAN – Port Entry Signals

- Harbour and Marina closed
- Marina open
- Harbour open, Marina closed
- Marina closed

Marina gate may be closed in severe weather. Clyde Marina Ch80 M. Hrbr Control Ch12 14 16

GENERAL REGULATIONS AND RECOMMENDATIONS

- Peelport's jurisdiction covers the River Clyde north of Brodick and Loch Ranza, with the exception of the Queen's Harbour, and the River Clyde upstream of Albert Bridge. See charts for exact boundaries.
- International Regulations for the Prevention of Collisions at Sea (ColRegs) apply throughout the Firth of Clyde. Rules 9 (Narrow Channels).
- Craft taking part in or organising racing or other events must comply with the Collision Regulations at all times.
- Rule 9. Narrow Channels (summary): A) keep to starboard side of a channel or fairway, and B) a sailing vessel, or one less than 20m, or a vessel engaged in fishing, shall not impede a vessel which must use the channel or fairway.
- Wash. Skippers of fast or heavy displacement craft should be aware of the wash they are creating, which can be a danger to other water users. Please regard restricted waters (such as the Kyles of Bute), and all areas adjacent to moored or anchored craft as NO WASH zones.
- Personal Water Craft (PWCs / Jet Skis) and all other fast craft must conform to the Merchant Shipping (Distress Signals & Prevention of Collision) regulations with particular regard to Rules 6 (Safe speed) & 8 (Action to avoid collision). They must always proceed at a safe speed and be fully aware of wash generated and its effect on other craft. Owners are encouraged to attend appropriate RYA courses and join local clubs. Use of PWC's is not considered appropriate upstream of the Erskine Bridge unless participating in a RYA approved course or by public services.
- Keep well clear of commercial vessels, including ferries, when close to piers and jetties. See Peelport's Notice to Mariners.
- It is an offence to moor to Navigation Buoys.
- Ensure that your vessel is exhibiting the appropriate lights and signals at all times.
- Always maintain a proper lookout at all times
- Kayaks and other very small craft - 'Be safe - Be seen'

See Leisure Notice to Mariners for advice

FIFTH EDITION



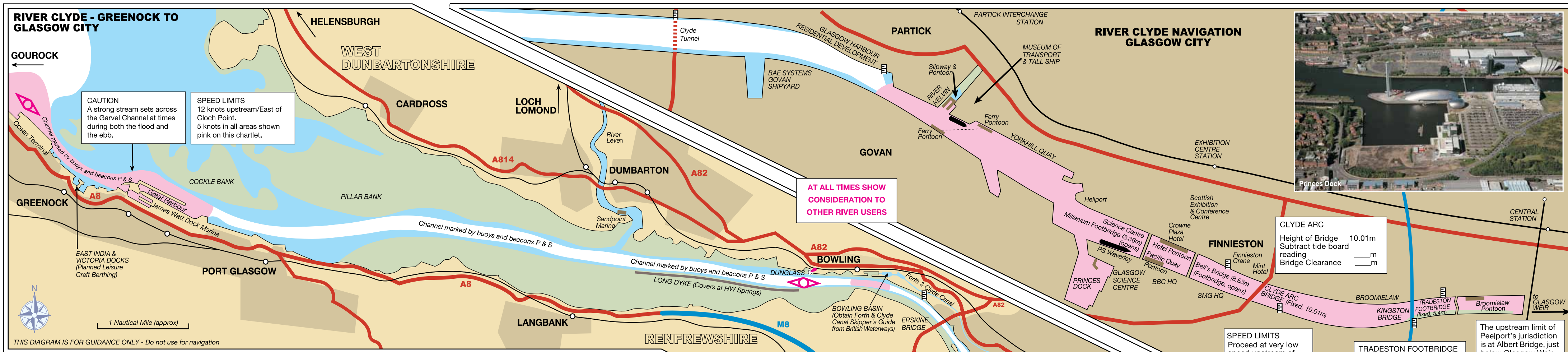
Clyde Leisure Navigation Guide



CONTACTS

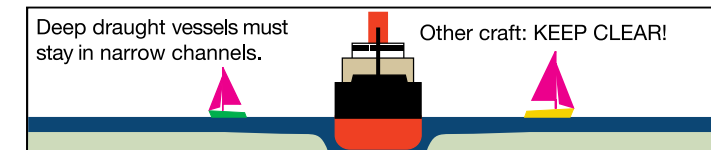
	VHF Channel	Telephone
EMERGENCIES	16	999 / 112
Peelports Estuary Radio	12	01475 726221
HM Coastguard	16 / 67	02891 463 933
Queen's Harbour Master (RN Faslane)	73	01436 674321 ext 3555 / 4005
British Waterways (Bowling Basin)	16 / 74	01389 877969 (See Peelports NtoM)
Kelvin Harbour Berthing	-	0141 357 3699 (office hours)
River Clyde Boatyard (Rothsay Dock)	-	0141 941 3366

Ardrrossan, Clyde Marina	01294 607077
Bowling Marina	01389 877969
Fairlie Quay	01475 568287
Holy Loch Marina	01369 701800
James Watt Dock Marina	01475 729838
Kip Marina	01475 521485
Largs Yacht Haven	01475 675333
Port Bannatyne Marina	01700 503116
Rhu Marina	01436 820238
Rothsay Marina	01700 500630



NAVIGATING FROM GREENOCK TO GLASGOW

- Check the Peelports Notices to Mariners. These are promulgated at clubs and marinas, and can be viewed and downloaded from www.peelports.com > operational > information.
- Reporting Points (VHF Ch 12) on the River Clyde are - see symbols on chart.
- Vessels planning an upriver passage should contact their destination or berth before proceeding.
- The speed limit upstream of Cloch Point is 12 knots, and 5 knots at locations marked by 'Dead Slow' notice boards. Due regard must be paid to the effect of your wash - see Peelports Notices to Mariners.
- The River Clyde Channel inwards from No1 Buoy is deemed to be a "Narrow Channel" as referred to in Rule 9 of the ColRegs. Vessels manoeuvring under sail alone are not considered appropriate in this area. All vessels navigating in this area are reminded of their obligations under the Rules for Narrow Channels



- Vessels under way E of Bowling must proceed under power only.
- The pontoon berth at Queens Quay, Clydebank can be used by visiting craft. Contact Clydebank Re-built: 0141 951 3420.
- Navigation of the River Cart should only be undertaken in daylight. Information from Renfrewshire Council: 0300 300 0330 (office hours).
- The pontoon berth at Braehead is not currently available for berthing.
- **Craft within or passing Rothesay Dock, where there is a fuel berth, must extinguish all naked lights.**

If you are proceeding upstream of the opening bridges at Glasgow Science Centre you must know your air draught, and also determine the overhead bridge clearances for the tide level at the time of passage, by calculation in advance, and on arrival by checking the height of the tide at the tide board at Yorkhill Quay, which gives the height of the tide above chart datum. Tide boards en route can also be consulted (see diagrams above).

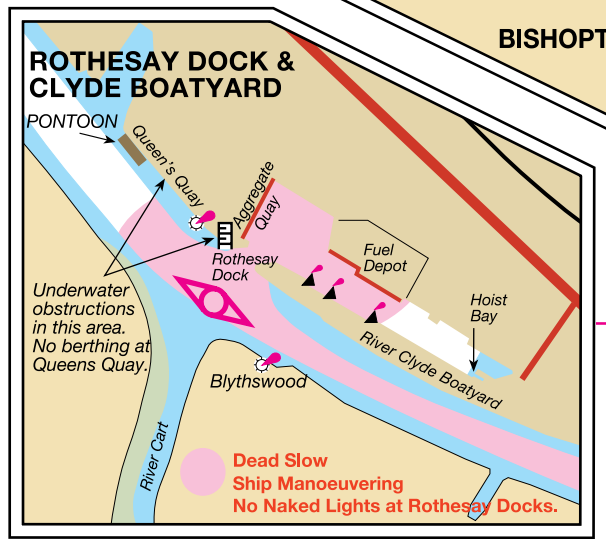
The opening Millennium Bridge (or Science Centre Bridge) is operated by the Glasgow Science Centre who can be contacted on 0141 420 5030 or 07733 889056. Between 0900-1700 1 hours notice is required and between 1700-0900 3 hours notice is required.

Bells Bridge is operated by Silvers Marine; 07815 869609 (mobile). At least 2 hours notice is required. Note: The bridges cannot be opened in wind speeds of more than 20 mph (17 knots).

- Berthing at Glasgow. For Kelvin Harbour berths call 0141 357 3699; Crowne Plaza berths can be booked by calling the SECC on 0141 275 6270. The pontoon facility at Pacific Quay and the Broomielaw pontoon are operated by Glasgow City Council (GCC). Information on GCC facilities can be obtained by phoning 0141 287 9028 (0800 - 1700), or 0141 276 1585 (1700 - 0800). Information is also available on the website www.riverclydeusers.info
- All vessels should maintain a continuous listening watch on VHF Channels 16 and 12 (Clydeport Estuary Radio), and observe the mandatory reporting points.

NAVIGATION UPSTREAM OF GLASGOW WEIR

- Sub-surface hazards exist upstream of Albert Bridge (W side).
- Vessels can only transit Glasgow Weir when high tide levels reach and exceed the impounded upstream level of 4.17m above chart datum. Predicted levels may not be achieved.
- Berthing upstream of the Weir is very limited.
- For safety reasons the Weir should if possible be traversed in daylight.
- The Weir access phone number is 0141 276 1585. Vessels can arrange passage through the Weir by phoning this number at any time. Advance notice is advisable.
- The Council takes no responsibility if river water levels or conditions make passage through the Weir impossible. Users navigate at their own risk.



- KEY**
- Note: Diagrams are for guidance only
 - Radio Reporting Point
 - Ship berthing location
 - Dead Slow: ship, small vessel & ferry manoeuvring areas
 - Pontoon berth
 - Metric Tide Board

CAUTION: THE DIAGRAMS IN THIS LEAFLET ARE FOR GUIDANCE ONLY, MAY NOT BE ACCURATE IN DISTANCE OR DIRECTION, AND SHOULD NOT BE USED FOR NAVIGATION.

TIDES

TIDAL INFORMATION	GREENOCK	GLASGOW	HUNTERSON
Tidal Range (Springs)	3.1m	4.0m	2.9m
Tidal Range (Neaps)	1.8m	2.2m	1.8m
Time Difference	00 mins	32 mins	15 mins

THE ROYAL NAVY - WARSHIPS

A number of different types of warships including submarines use the Gareloch, Loch Long and the Firth of Clyde Channel. The ships vary from small mine hunters to large submarines and warships. Larger vessels will remain within the Narrow Channel, where Rule 9 applies.

Warships should not be approached closer than 250 metres, as they may be on an exercise and may make unexpected and large alterations in course or speed.

SUBMARINES

Submarines operate on the Clyde all year round.

Whilst moving through the Clyde, they will be on the surface. Submarines are not especially manoeuvrable on the surface and will follow the channels.

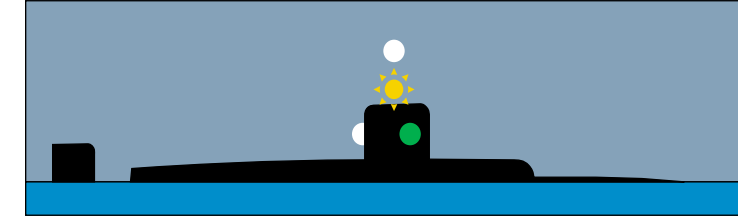
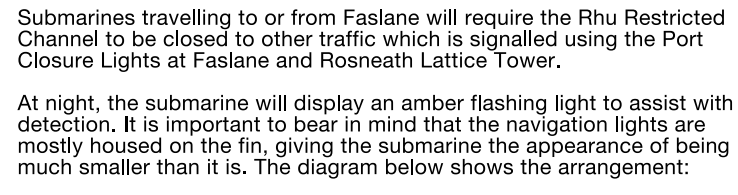
They may be escorted by security vessels, especially police launches and inflatables. Other vessels should observe Rule 9, giving these vessels a wide berth. Police vessels will intercept vessels which come too close, particularly if they are likely to embarrass the safe navigation of the vessel.

Both the police vessels and the submarine will monitor VHF Channels 16 and 12 whilst in the Clydeport area.

Because of the submarines' low freeboard, they are often difficult to see even in daytime, they also have a low radar signature so it is prudent to keep a good look out and to monitor VHF.

Submarines travelling to or from Faslane will require the Rhu Restricted Channel to be closed to other traffic which is signalled using the Port Closure Lights at Faslane and Rosneath Lattice Tower.

At night, the submarine will display an amber flashing light to assist with detection. It is important to bear in mind that the navigation lights are mostly housed on the fin, giving the submarine the appearance of being much smaller than it is. The diagram below shows the arrangement:



WARSHIPS

A large number of warships of all NATO nations and classes can be seen on the Clyde in the spring and autumn as well as occasionally throughout the year.

These vessels will use the navigation channels to transit through the Clyde, observing the Rule of the Road as any other power driven vessel. The vessels will also monitor VHF channels 16 and 12. The vessels pose no hazard and can be easily seen.

Larger vessels approaching Faslane may require the Rhu Restricted Channel to be closed to other traffic which will be indicated by the Port Closure Lights.

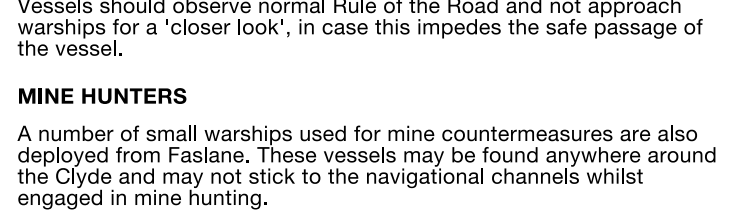
Vessels should observe normal Rule of the Road and not approach warships for a 'closer look', in case this impedes the safe passage of the vessel.

MINE HUNTERS

A number of small warships used for mine countermeasures are also deployed from Faslane. These vessels may be found anywhere around the Clyde and may not stick to the navigational channels whilst engaged in mine hunting.

Whilst engaged in mine hunting, these vessels will display three all round green lights or three balls. One of these lights or shapes shall be exhibited near the foremast head and one at each end of the fore yard (see below).

These vessels are restricted in their ability to manoeuvre whilst these lights and shapes are exhibited. It is dangerous for another vessel to approach within 1,000 metres when these signals are displayed.



Photographs: Mike Balmforth, Glasgow Museums